
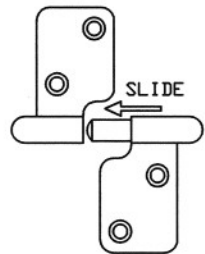
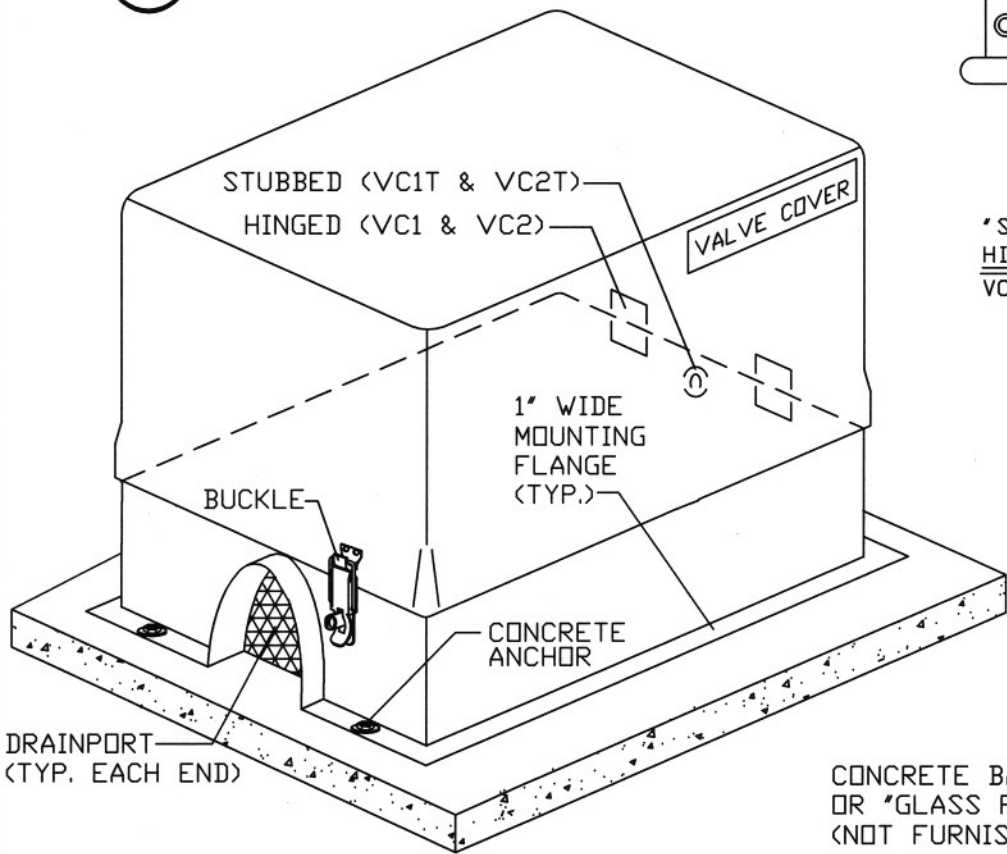


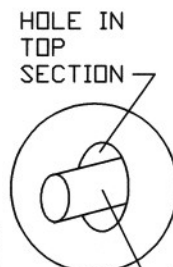
NOTES:

1. INSTALL ENCLOSURE VIA CONCRETE HAMMER NAILS THROUGH FLANGE.
2. TESTING/MAINTENANCE ACCESS VIA FLIP-TOP, HINGED LID OR LIFT-OFF LID.
3. VC1 AND VC2 HAVE HINGED LID WITH "SLIP-BUTT" HINGES.
4. VC1T AND VC2T HAVE LIFT-OFF LIDS WITH STUBS.
5. AVAILABLE WITH OR WITHOUT INSULATION ("VGVC" WITHOUT INSULATION).
6. HEAT TRACE CABLE OPTIONAL ("VCH" WITH HEAT).
7.  CERTIFIED.

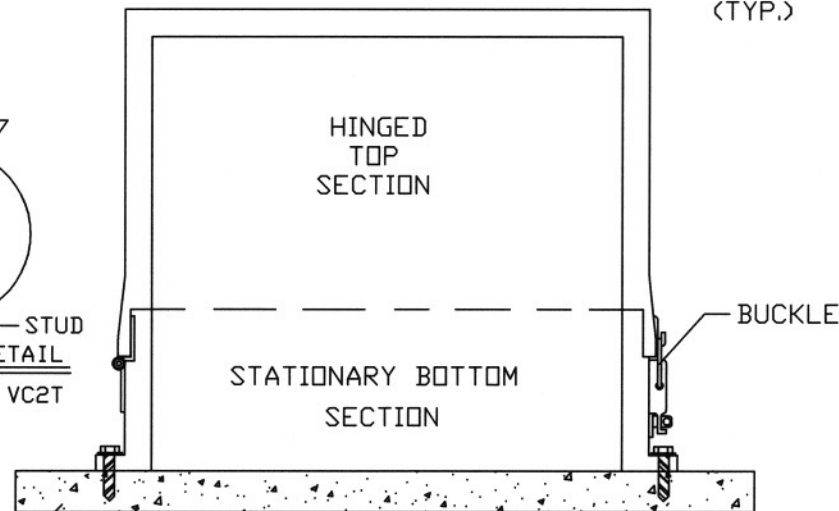
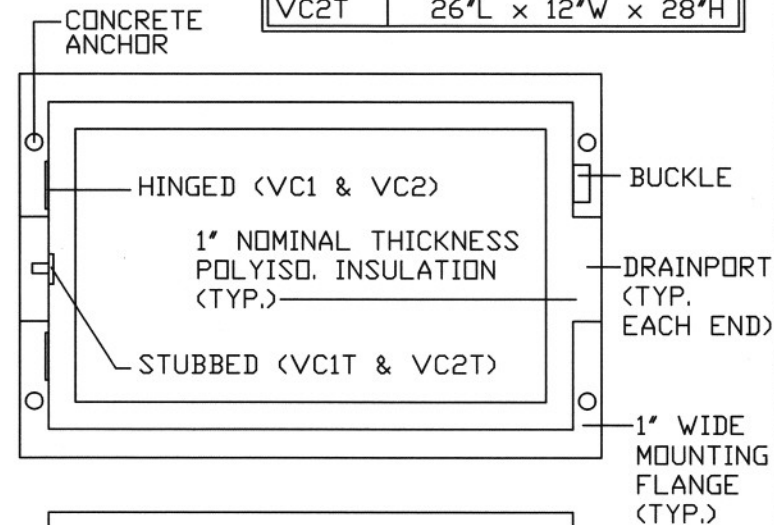
MODEL	ENCLOSURE SIZE
VC1	18"L x 9"W x 18"H
VC1T	18"L x 9"W x 24"H
VC2	26"L x 12"W x 20"H
VC2T	26"L x 12"W x 28"H



'SLIP BUTT'  
HINGE DETAIL  
VC1 AND VC2



HOLE IN TOP SECTION  
'STUD' DETAIL  
VC1T AND VC2T



RESTRICTED DRAWING.  
PATENT # 4,726,394.

Hot Box®  
924 LANE AVE. N.  
JACKSONVILLE, FLORIDA 32254  
(904) 786-0204 (800) 736-0238  
FAX (904) 783-6965  
<http://www.hot-box.com>

TITLE: "VALVE COVER"™ ENCLOSURE  
ASSEMBLY AND INSTALLATION DRAWING

BY/DATE/DWG:  
SBT / 1-20-03  
VC-1C

ENGINEER / CONTRACTOR :

LOCATION :

APPROVED/DATE :

CATALOG / SUBMITTAL DRAWING

REV. 1 :  
4-10-04

REV. 2 :  
4-29-04

REV. 3 :

SCALE:  
N.T.S.

REP. / DISTRIBUTOR :

QUOTE NO.: